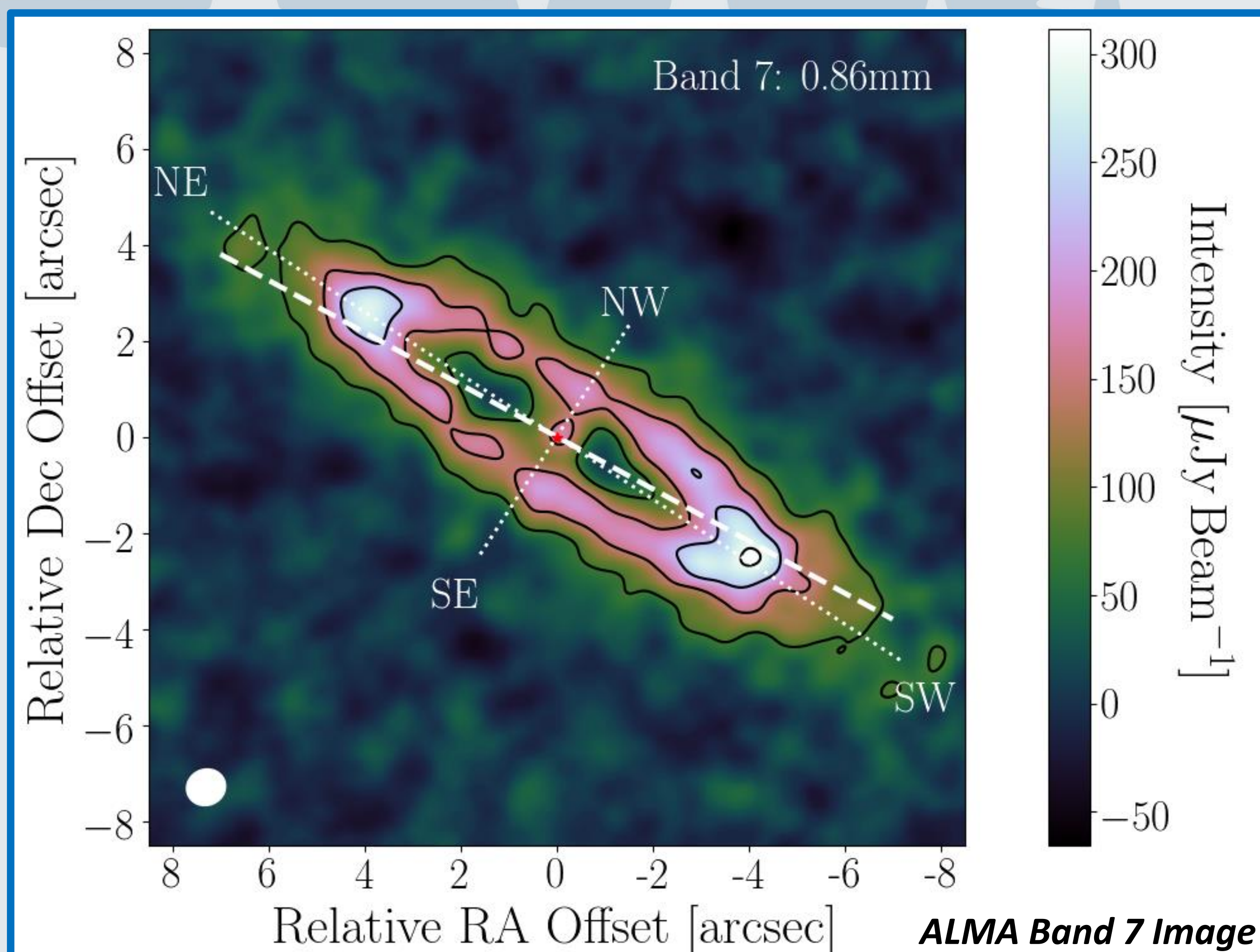


What lies beyond exo-Jupiters? Connecting discs and planets with q^1 Eridani

J. B. Lovell, S. Marino, M. C. Wyatt, M. A. MacGregor, K. Stapelfeldt, G. M. Kennedy, B. Dent, Q. Kral, J. Krist, L. Matrà, O. Pani'c, T. Pearce, D. Wilner



q^1 Eri: ~Gyr old star with a bright debris disc, and an RV-confirmed exo-Jupiter planet



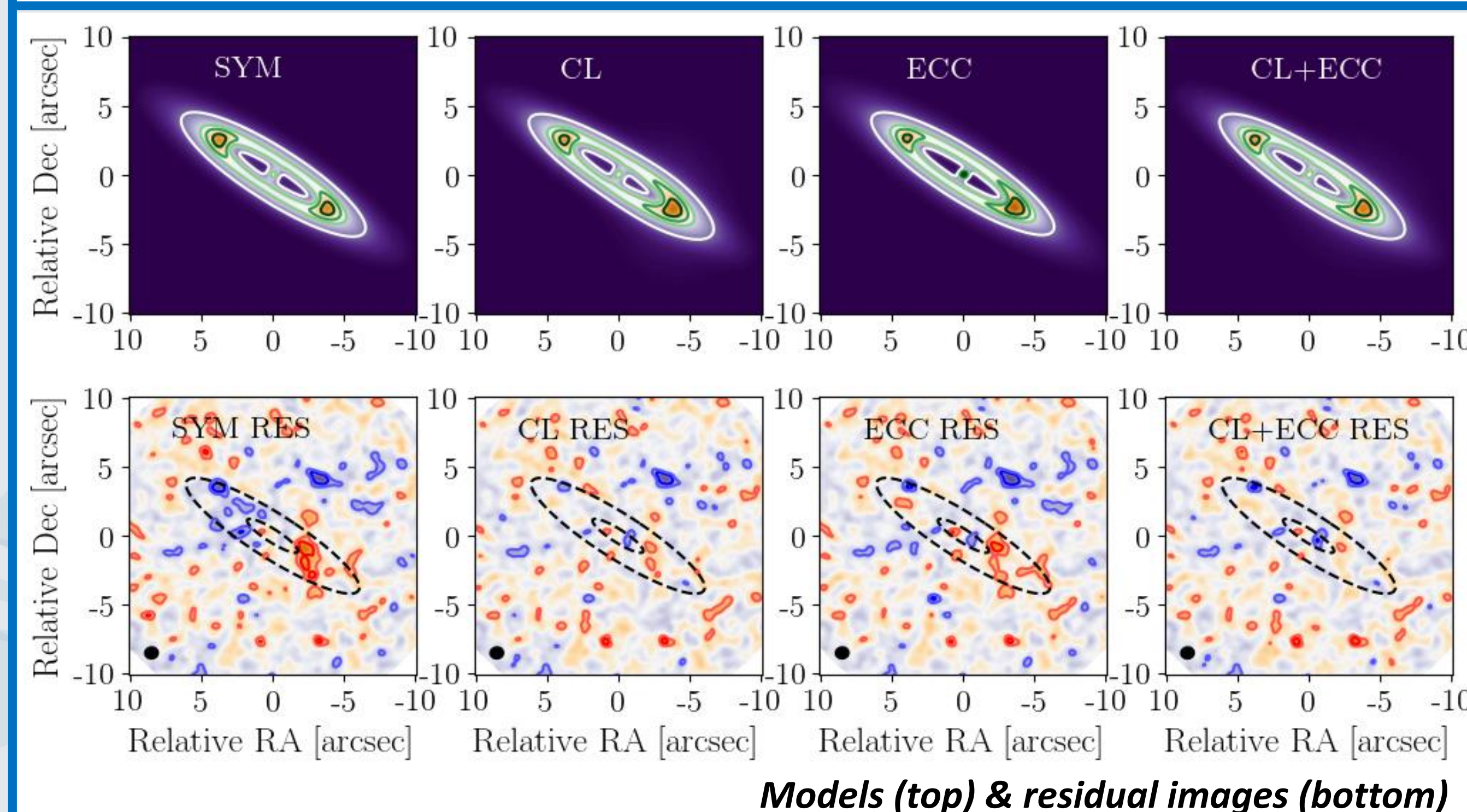
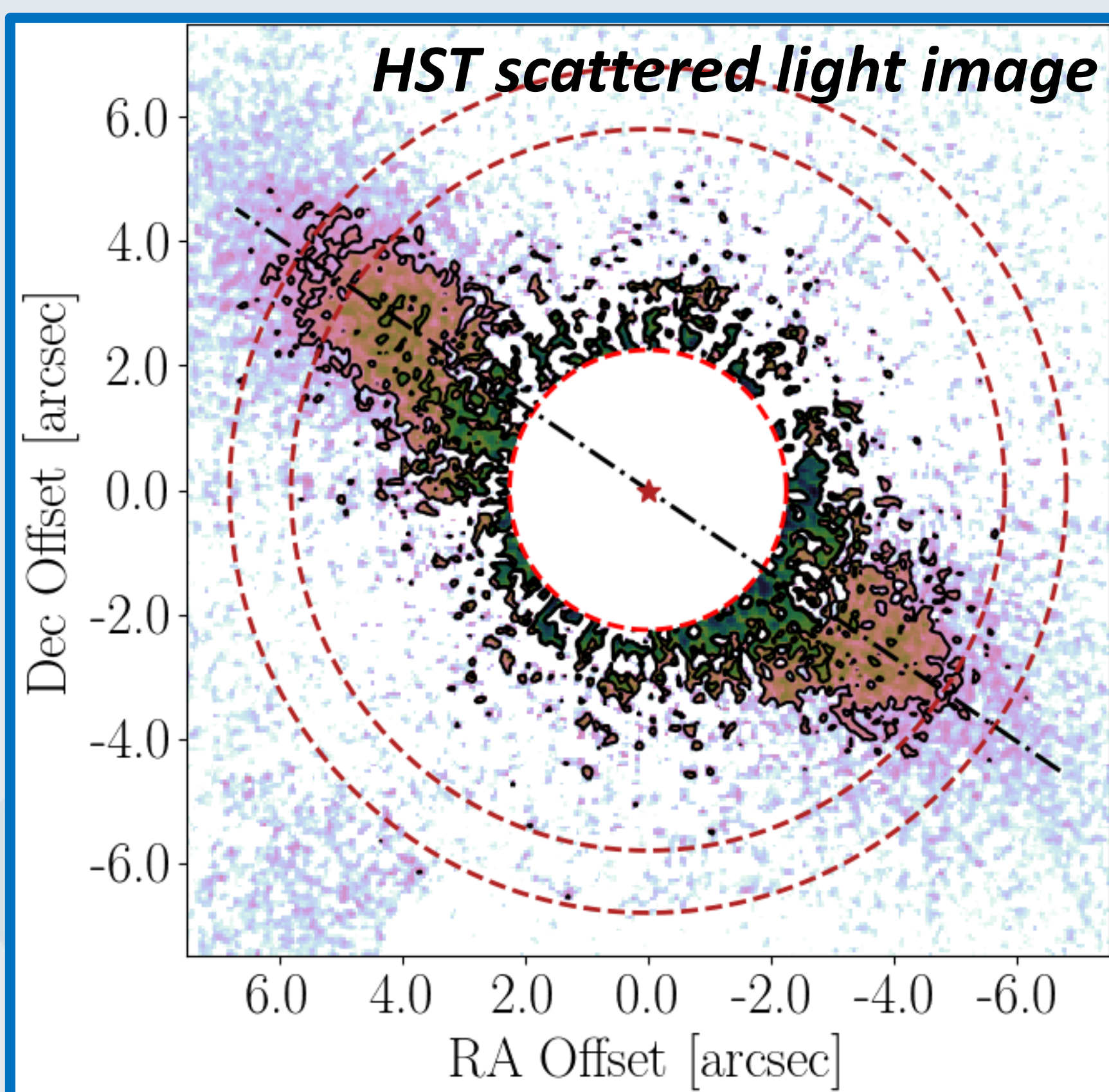
ALMA & HST:
 q^1 Eri's disc is asymmetric with a clump in South-West...
 ...but is this from collisions or planets?

See Lovell+21c [in press] for more!



Joshua B. Lovell
 PhD Candidate,
 Institute of Astronomy,
 University of Cambridge
 JL638@cam.ac.uk

[Other work: available here](#)



Key References

Butler R. P., et al. 2006 ApJ, 646, 505 // Liseau R., et al. 2008, A&A, 480, L47
 Lovell J. B., et al. 2021c [in press] // Stapelfeldt et al. 2007